

Toad Data Modeler Freeware 3.6.6

Installation Guide



© 2010 Quest Software, Inc.
ALL RIGHTS RESERVED.

This guide contains proprietary information protected by copyright. The software described in this guide is furnished under a software license or nondisclosure agreement. This software may be used or copied only in accordance with the terms of the applicable agreement. No part of this guide may be reproduced or transmitted in any form or by any means, electronic or mechanical, including photocopying and recording for any purpose other than the purchaser's personal use without the written permission of Quest Software, Inc.

The information in this document is provided in connection with Quest products. No license, express or implied, by estoppel or otherwise, to any intellectual property right is granted by this document or in connection with the sale of Quest products. EXCEPT AS SET FORTH IN QUEST'S TERMS AND CONDITIONS AS SPECIFIED IN THE LICENSE AGREEMENT FOR THIS PRODUCT, QUEST ASSUMES NO LIABILITY WHATSOEVER AND DISCLAIMS ANY EXPRESS, IMPLIED OR STATUTORY WARRANTY RELATING TO ITS PRODUCTS INCLUDING, BUT NOT LIMITED TO, THE IMPLIED WARRANTY OF MERCHANTABILITY, FITNESS FOR A PARTICULAR PURPOSE, OR NON-INFRINGEMENT. IN NO EVENT SHALL QUEST BE LIABLE FOR ANY DIRECT, INDIRECT, CONSEQUENTIAL, PUNITIVE, SPECIAL OR INCIDENTAL DAMAGES (INCLUDING, WITHOUT LIMITATION, DAMAGES FOR LOSS OF PROFITS, BUSINESS INTERRUPTION OR LOSS OF INFORMATION) ARISING OUT OF THE USE OR INABILITY TO USE THIS DOCUMENT, EVEN IF QUEST HAS BEEN ADVISED OF THE POSSIBILITY OF SUCH DAMAGES. Quest makes no representations or warranties with respect to the accuracy or completeness of the contents of this document and reserves the right to make changes to specifications and product descriptions at any time without notice. Quest does not make any commitment to update the information contained in this document.

If you have any questions regarding your potential use of this material, contact:

Quest Software World Headquarters
LEGAL Dept
5 Polaris Way
Aliso Viejo, CA 92656
email: legal@quest.com

Refer to our Web site (www.quest.com) for regional and international office information.

Trademarks

Quest, Quest Software, the Quest Software logo, Toad, T.O.A.D., Toad World are trademarks and registered trademarks of Quest Software, Inc in the United States of America and other countries. For a complete list of Quest Software's trademarks, please see <http://www.quest.com/legal/trademarks.aspx>. Other trademarks and registered trademarks are property of their respective owners.

Toad Data Modeler 3.6.6 Freeware

Installation Guide

September 2010

Table of Contents

Introduction	4
Notes before Installation:	4
Freeware Version Information	5
Functionality Restrictions:	5
System Requirements	6
Virtualization Support	6
Supported Database Platforms	7
First Installation (Clean Install)	8
Upgrade	10
Side-by-Side Installation	11
Silent Installation	12
Shortcuts	12
Database Platforms	13
Un-Installation	15
Default Locations	16
1. After Toad Data Modeler is installed	16
2. After you run Toad Data Modeler	17
Appendix: Contact Quest	19
Contact Quest Support	19
Contact Quest Software	19
About Quest Software	19
Index	20

Introduction

Open and unzip the installation package that contains:

- Setup.MSI file,
- Release Notes.htm file,
- Installation Guide.pdf file.

Notes before Installation:

1. If you have installed any version of Toad Data Modeler (TDM) using the TDM stand alone installer and run any of the Toad bundles that contain Toad Data Modeler, the Quest Installer will display incorrectly that Toad Data Modeler has not been installed.
2. Installing features for Toad Data Modeler: During the initial installation of Toad Data Modeler you have the option to install support for the various database platforms, using the new 'Features' functionality within the Quest Installer (QI). If you want to add new features (after TDM is already installed), you must do so from the Control Panel via the Add or Remove Programs section in your operating system.
3. To install Toad Data Modeler successfully, Administrator privileges are necessary.
4. Toad Data Modeler supports side-by-side installation.
 - Upgrade – New version of Toad Data Modeler is installed to the same folder where previous version was installed.
 - Side-by-side Installation - New version of Toad Data Modeler is installed to another location.
5. Do NOT open and resave models originally created in a developmentally higher version of Toad Data Modeler (e.g. in v. 3.5.10) in lower version of Toad Data Modeler (e.g. in v. 3.4.15).
6. Note for users of Toad Data Modeler BETA: BETA uses different folders for configuration files and other default directories than Toad Data Modeler Commercial version. You can install and use both versions on one computer.

Freeware Version Information

Duration: Toad Data Modeler 3.6.6 Freeware is valid 120 days after installation, until 17th August 2010 at the latest.

Functionality Restrictions:

- **Save Model** – You can save a model with max 25 entities.
- **Preview** - You can preview a model with max 25 entities.
- **Print** – You can print a model with max 25 entities.
- **Export to Graphic File** – You can export a model with max 25 entities to graphic file.
- **Alter Report** – You can generate alter report for a model with max 25 entities.
- **Report** – PDF reports with watermarks are limited to a maximum of 25 entities. Number of reported other objects is not limited. HTML and RTF reports cannot be generated.
- **XSL Transformation Report** – You can generate the XSL Transformation report only for first 25 entities of the model. Other objects (procedures, functions etc.) don't have any limitation.
- **SQL/DDDL Script Generation** – You can generate SQL/DDDL script only for first 25 entities of the model. Other objects (procedures, functions etc.) don't have any limitation.
- **Alter Script Generation** – This feature is not available at all.
- **Reverse Engineering** - Reversing database schema is limited to 25 entities. Other objects have no limitation.

Note: To use Toad Data Modeler without these restrictions, please contact your Quest Sales Representative at sales@quest.com to request a full functionality trial override key.

System Requirements

Before installing Toad Data Modeler, ensure your system meets the following minimum hardware and software requirements:

	Minimal Requirements	Optimal
Platform	Pentium IV	Pentium dual core
Memory	256 MB	1 GB
Hard Disk Space	100 MB	200 MB
Operating System	Windows 2000 Professional Edition (Service Pack 4) Windows XP (32-bit or 64-bit) Windows Vista (32-bit or 64-bit) Windows Server 2003 (32-bit or 64-bit) Windows Server 2008 (32-bit or 64-bit) Windows 7 (32-bit or 64-bit)	

Virtualization Support

Before installing Toad Data Modeler, review the following for virtualization support:

Application Virtualization	Toad Data Modeler has been tested for Citrix support on Windows Server 2003 Enterprise Server (Service Pack 2) using the MetaFrame Presentation Server 4.0 and Citrix Presentation Server Clients 10.2.
Desktop Virtualization (VDI)	Toad Data Modeler has been tested with the following: Quest vWorkspace 7.0 running on Windows XP (32-bit) Note: Problem during print on virtual printer - The problem occurs only in case of print from local machine (all printers from local machine are visible on vWorkspace). If the virtual printer is installed on vWorkspace directly, the problem doesn't occur.
Server Virtualization	Toad Data Modeler has been tested with VMware Server 2 running on Windows 7.

Supported Database Platforms

Toad Data Modeler supports the following database platforms:

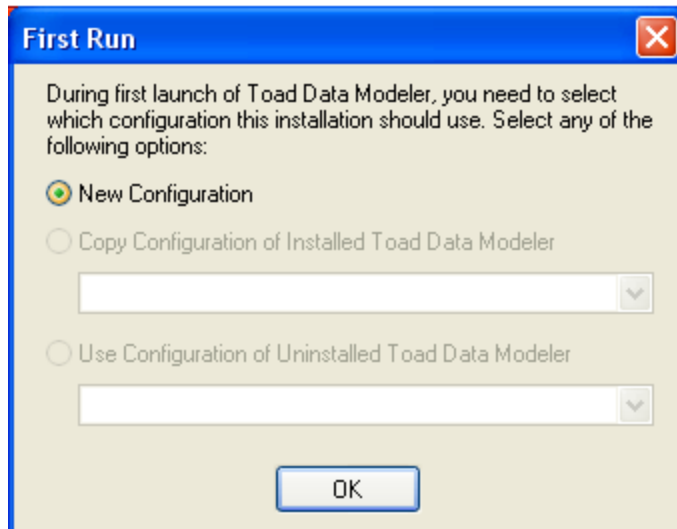
- DB2 UDB v. 8 (LUW), 9.0 (LUW), 9.5 (LUW), 9.7 (LUW)
- DB2 z/OS v. 9
- MS Access 2000/2002/2003
- MS SQL Azure
- MS SQL Server 2000, 2005, 2008
- MySQL 5.0, 5.1
- Oracle 9i, 10g, 11g R1, 11g R2
- PostgreSQL 8.1, 8.2, 8.3, 8.4
- Sybase ASE 12.5, 15
- Sybase SQL Anywhere 11

First Installation (Clean Install)

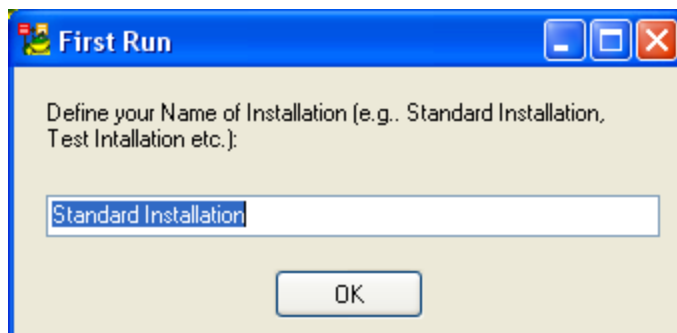
1. Run the Toad Data Modeler Setup Wizard and go through the installation process.
Default path where Toad Data Modeler is installed:
C:\Program Files\Quest Software\Toad Data Modeler 3
2. Select what features (support for various database systems) you want to install.
3. In the end of the installation process, select **Run Toad Data Modeler** and click **Finish**.

Note: Toad Data Modeler allows side-by-side installation. Although this is your first installation, Toad Data Modeler needs to create a new Installation folder where configuration settings and other files will be saved. Therefore, the following dialog will occur.

Only New Configuration option is available. Click **OK**.



4. Name the Installation folder. *Standard Installation* is a default name. Confirm **OK**.



5. Toad Data Modeler opens in a trial mode. If you have obtained your commercial key, click **Enter Commercial Key** and enter your license key.

Note: After you install Toad Data Modeler, a new installation folder will be created in your Documents and Settings directory – *Standard Installation*.

Upgrade

If you select this installation method, it means that:

- You had Toad Data Modeler installed on your computer (v. 3.5.x or previous) and uninstalled it before the new version installation.

OR

You did not uninstall previous version and still have Toad Data Modeler (v. 3.5.x or previous) installed on your computer.

- You install the new version to the **same location** where the previous version is.

Steps:

1. Run the Toad Data Modeler Setup Wizard and go through the installation process.
Default path where Toad Data Modeler is installed:
C:\Program Files\Quest Software\Toad Data Modeler 3
2. Select what features (support for various database systems) you want to install.
3. In the end of the installation process, select **Run Toad Data Modeler** and click **Finish**.
4. Select either new configuration or configuration settings of previous version and click **OK**.

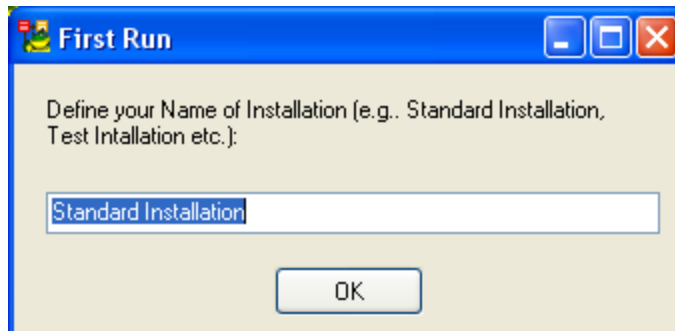
Side-by-Side Installation

If you select this installation method, it means that:

- You already have Toad Data Modeler installed on your computer (v. 3.5.x or previous). You do not uninstall this old version.
- You install the new version to a new location.

Steps:

1. Run the Toad Data Modeler Setup Wizard and go through the installation process.
2. In step **Destination Folder**, define a new path where the new Toad Data Modeler version should be installed.
3. Continue the installation process and select what features (support for various database systems) you want to install.
4. Select either new configuration or configuration settings of previous version and click **OK**. For new configuration settings, define a new name for the Installation folder. *Standard Installation* is a default name. Confirm **OK**.



5. Toad Data Modeler opens in a trial mode.
If you are a holder of a permanent license key, click **Enter Commercial Key** and enter your license key information from previous Toad Data Modeler version (see e.g. the **Help** menu | **Licensing**).

Note: You will not have to enter your commercial key again if you use Vista OS.

Silent Installation

To perform a silent installation of Toad Data Modeler, you must have the setup.MSI file for Toad Data Modeler. This MSI is then used with the installation variable to define the installation options. The argument for the silent installation from a command line is “/q”. To specify a directory where Toad Data Modeler should be installed, it is possible to use `INSTALLDIR=“PATH”` . (Otherwise, the default path will be used.)

Example:

```
setup.msi /q INSTALLDIR="C:\Program Files\Quest Software\Toad Data Modeler 3\"
```

In order to specify for which database platform Toad Data Modeler should be installed or which shortcuts should be created and where, use the parameter `ADDLOCAL`. If this parameter is not used, default installation will be performed.

Example:

```
setup.msi /q INSTALLDIR="C:\Program Files\Quest Software\Toad Data Modeler 3\"  
ADDLOCAL=Complete,XPMANIFEST,SUPPORTDATABASES,SHORTCUTUNINSTALL,SHORTCUTDESKTOP,SHORTCUTSTARTMENU,SHORTCUTQUICKLAUNCH,SHORTCUTHelp
```

Provided that you use the parameter `ADDLOCAL` , always select the options `Complete`, `XPMANIFEST`, `SUPPORTDATABASES`. These three options are obligatory for the correct installation.

During installation of support for particular database platform, it is necessary to install basic support for the selected database platform.

Example: For successful installation of support for Oracle 10g database, Oracle must be selected too.

Shortcuts

SHORTCUTUNINSTALL	Creates a shortcut for uninstall in Start Menu.
SHORTCUTDESKTOP	Creates a shortcut for Toad Data Modeler on desktop.
SHORTCUTSTARTMENU	Creates a shortcut for Toad Data Modeler in Start Menu.
SHORTCUTQUICKLAUNCH	Creates a shortcut for Toad Data Modeler in Quick Launch bar.
SHORTCUTHelp	Creates a shortcut for Help file, User Manual and Reference Guide in Start Menu.

Database Platforms

DB2 (LUW)

DB2 - Basic support for DB2 (LUW)

DB2UDBv8 - Support for DB2 UDB 8 (LUW)

DB2v9 - Support for DB2 9 (LUW)

DB2v95 - Support for DB2 9.5 (LUW)

DB2v9.7 - Support for DB2 9.7 (LUW)

DB2 zOS

DB2zOSv9 - Support for DB2 zOS v. 9

MS Access

MSACCESS - Basic support for MS Access

MSACCESS_2000_2003 - Support for MS Access 2000/2002/2003

MS SQL Azure

MSSQL_AZURE - Support for MS SQL Azure

MS SQL Server

MSSQL - Basic support for MS SQL Server

MSSQL2000 - Support for MS SQL 2000

MSSQL2005 - Support for MS SQL 2005

MSSQL2008 - Support for MS SQL 2008

MySQL

MYSQL - Basic support for MySQL

MYSQL50 - Support for MySQL 5.0

MySQL51 - Support for MySQL 5.1

Oracle

ORACLE - Basic support for Oracle

ORACLE_9 - Support for Oracle 9i

ORACLE_10G - Support for Oracle 10G

ORACLE_11G_R1 - Support for Oracle 11G

ORACLE_11G_R2 - Support for Oracle 11G R2

PostgreSQL

POSTGRESQL - Basic support for PostgreSQL

POSTGRESQL81 - Support for PostgreSQL 8.1

POSTGRESQL82 - Support for PostgreSQL 8.2

POSTGRESQL83 - Support for PostgreSQL 8.3

POSTGRESQL84 - Support for PostgreSQL 8.4

Sybase ASE

SYBASE - Basic support for Sybase ASE

SYBASE12.5 - Support for Sybase ASE 12.5

SYBASE15 - Support for Sybase ASE 15

Sybase SQL Anywhere

SYBASE_SQL_ANYWHERE_11 - Support for Sybase SQL Anywhere 11

Universal Database

UNIVERSAL_DATABASE - Support for universal database platforms

Other parameters for silent installs can be found after you set the “setup.msi ?” command.

Un-Installation

To uninstall Toad Data Modeler, you must do so from the Control Panel via the **Add or remove programs** section in your operating system.

Note: All user files remain preserved after the un-installation. You can find them at: C:\Documents and Settings\user name\My Documents\Toad Data Modeler; and configuration files at: C:\Documents and Settings\user name\Application Data\Quest Software\Toad Data Modeler. For complete un-install (which means you will lose all your models, generated scripts, reports, Version Manager etc.), delete these folders too.

Default Locations

As Toad Data Modeler supports side-by-side installation, there are two folders:

Installation

- Default path: C:\Documents and Settings\user name\Application Data\Quest Software\Toad Data Modeler\Installation #.
- The number of installation is increasing with every new installation.
- In this folder, configuration files and Version Manager files are stored.

Standard Installation (or <name> installation that you define)

- Default path: C:\Documents and Settings\user name\My Documents\Toad Data Modeler\Standard Installation
- In this folder, aliases, models, naming conventions, user packages, user OTPs, styles and XSL files are stored.

In this location: C:\Documents and Settings\user name\My Documents\Toad Data Modeler, there are GeneratedScripts, Logs and Reports folders (folders for outputs) and the new Standard Installation folder where user's files are stored.

1. After Toad Data Modeler is installed

Toad Data Modeler application is installed to: *C:\Program Files\Quest Software\Toad Data Modeler 3*. Here, the following directories can be found:

BIN

In this directory, particularly the TDM.exe and Support.xml file containing list of supported database systems are stored. Libraries for reverse engineering of particular databases (*.dll files) are stored here too.

Configs

Config files with default settings and default layout of Toad Data Modeler are stored here (TDM.txe and .txd files).

Documents

Directory with documentation to Toad Data Modeler – User Guide, Help file, Reference Guide, License Agreement and Third Party License.

Naming Conventions

Directory with .csv files that can be imported and used in glossaries for naming conventions in Toad Data Modeler.

Packages

System packages and metamodels are stored in System subdirectory. Default *My Package* and Templates package are stored in User subdirectory.

Samples

Directory with sample Toad Data Modeler models.

Selected OTPs

Directory with .txo files for each supported database platform and logical model, containing Default (System) Selected Object Types and Properties.

Styles

Default CSS styles for report generation.

Version Manager

Definitional files for Version Manager.

XSL

Directory with .xslt files - templates for XSL transformation.

Release Notes document

Document with information on the product release.

2. After you run Toad Data Modeler

After you run the application, new directories will be created in your *Documents and Settings* directory. The files that you can modify will be copied to these directories. (From C:\Program Files\Quest Software\Toad Data Modeler 3).

All changes you make in the files (e.g. changes in the application layout, new aliases, modified styles in reports, new default path to generated SQL/DDDL code, modified My Package.txg file etc.) will be saved in your *Documents and Settings* directory and will be preserved when you update the application.

If you need to restore the original default settings, you can simply delete appropriate file in the *Documents and Settings* directory. When you run Toad Data Modeler then, appropriate original default file from C:\Program Files\Quest Software\Toad Data Modeler 3 will be copied to the *Documents and Settings* directory again.

You will find the 'user' files in the following locations:

1. **C:\Documents and Settings\user name\Application Data\Quest Software\Toad Data Modeler\Installation #**

Here, Configs and Version Manager directories can be found.

Note: The number of installation will be increasing with every new installation.

Configs

Config files with settings of Toad Data Modeler and TDM.txe file with the application environment (layout) are stored here.

Version Manager

Structure that you create in Version Manager is saved here.

2. **C:\Documents and Settings\user name\My Documents\Toad Data Modeler\Installation name**

Here, the following directories are created:

Aliases

Aliases you create and save during reverse engineering.

Models

Default path for physical and logical models you create in Toad Data Modeler.

Naming Conventions

Directory with naming convention definitions (.txn files) that you create in Toad Data Modeler.

Packages

Directory with metamodels and packages (.txg files). User packages - *My Package* and add-ons are stored here, including the Templates.txg package.

Selected OTPs

Directory with User Selected Object Types and Properties.

Styles

Default path to CSS styles for reports.

XSL

Directory where user .xslt files for XSL transformation are stored.

3. **C:\Documents and Settings\user name\My Documents\Toad Data Modeler**

Here, the following directories are created:

Generated Scripts

Directory where DDL/SQL script and alter scripts are generated.

Reports

Directory where HTML, RTF reports, PDF and XSLT outputs are generated.

Appendix: Contact Quest

Contact Quest Support

Quest Support is available to customers who have a trial version of a Quest product or who have purchased a Quest product and have a valid maintenance contract. Quest Support provides unlimited 24x7 access to SupportLink, our self-service portal. Visit SupportLink at <http://support.quest.com>.

From SupportLink, you can do the following:

- Retrieve thousands of solutions from our online Knowledgebase
- Download the latest releases and service packs
- Create, update and review Support cases

View the Global Support Guide for a detailed explanation of support programs, online services, contact information, policies and procedures. The guide is available at: <http://support.quest.com>.

Contact Quest Software

Email info@quest.com

Quest Software, Inc.

World Headquarters

Mail 5 Polaris Way
Aliso Viejo, CA 92656
USA

Web site www.quest.com

See our web site for regional and international office information.

About Quest Software

Quest Software simplifies and reduces the cost of managing IT for more than 100,000 customers worldwide. Our innovative solutions make solving the toughest IT management problems easier, enabling customers to save time and money across physical, virtual and cloud environments. For more information about Quest go to www.quest.com.

Index

V

virtualization

6

A

after toad data modeler is installed 16

after toad data modeler is run 17

B

before installation notes 4

C

citrix support 6

D

default locations 16

F

first installation 8

freeware validity 5

freeware version limitations 5

O

operating systems 6

S

side-by-side installation 11

silent installation 12

supported database platforms 7

system requirements 6

U

upgrade 10